

Mounting Instructions Magnet Housing Changing Magnet Bushings



Safety precautions:

Be careful with the magnet, it is very strong and can suddenly move when steel or another magnet is in the area.
Only disassemble or assemble one magnet at the time.

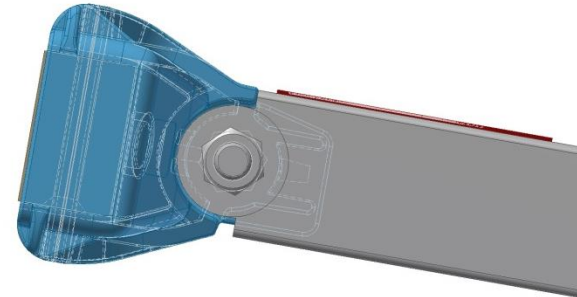
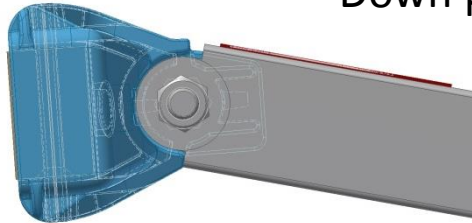
When the magnet housing is disassembled and it has to be mounted back onto the Stanchion the magnet housing must be able to make the following movements.

Checking procedure Magnet Housing

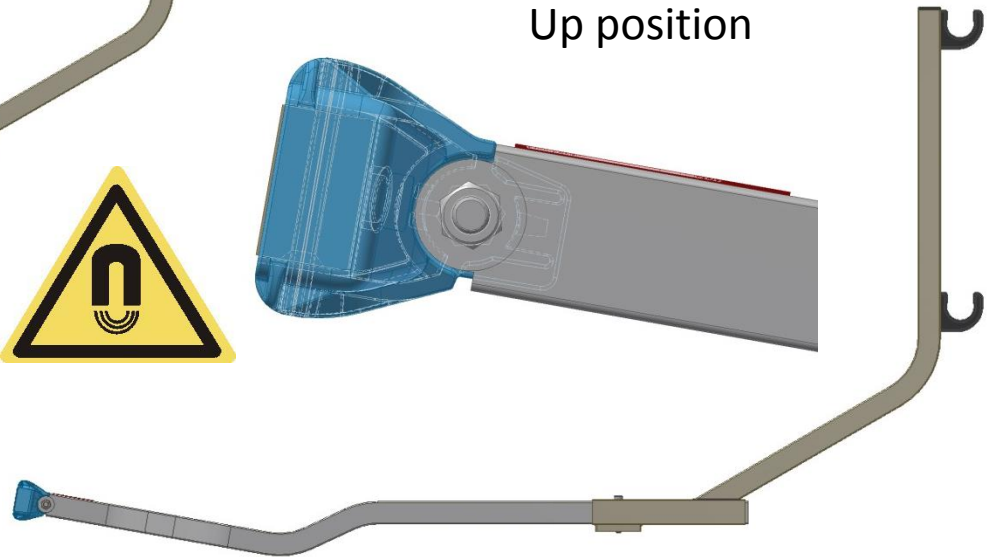
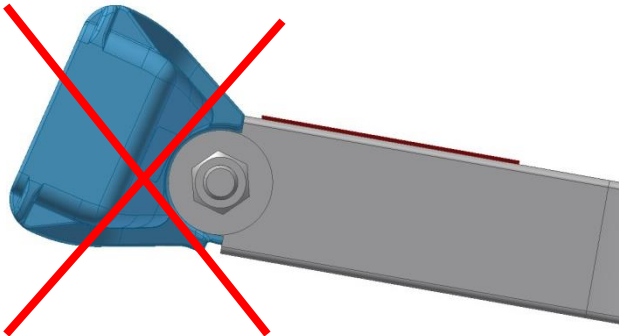
Down position

After mounting the magnet housing the following positions must be possible.

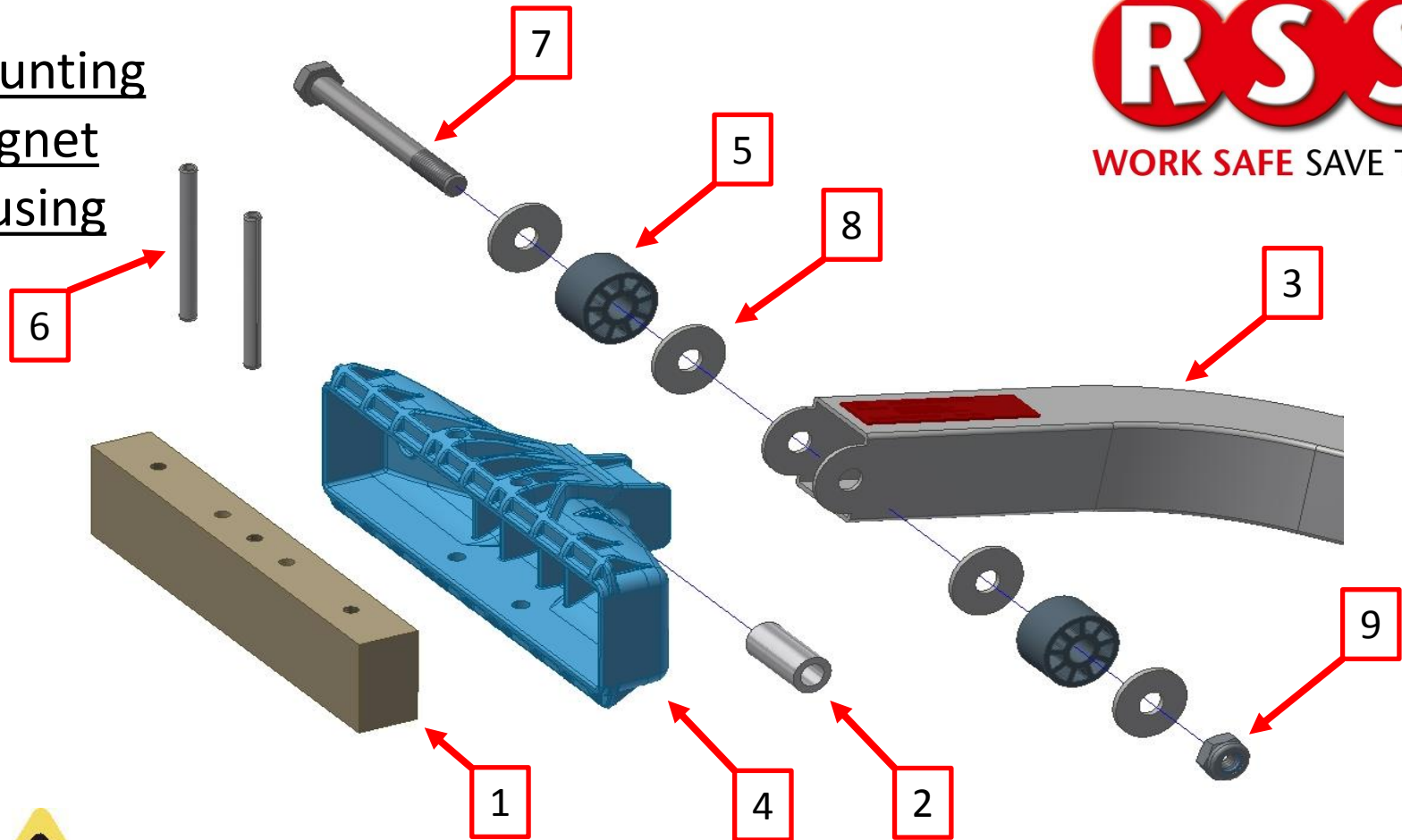
Up position



WRONG position



Mounting Magnet Housing



- Pos 1 396 Magnet
- Pos 2 M439 Bushing
- Pos 3 M440 Stanchion
- Pos 4 M448 Magnet Housing
- Pos 5 M503 Plastic Bushing

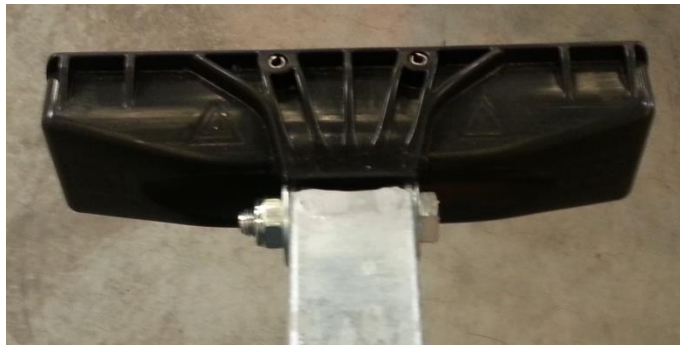
- Pos 6 ISO 8752 6x70 ss
- Pos 7 DIN 24014 M10x100 zp 8.8
- Pos 8 DIN 9021 M10 zp
- Pos 9 DIN 985 M10 zp 8 (22 Nm)



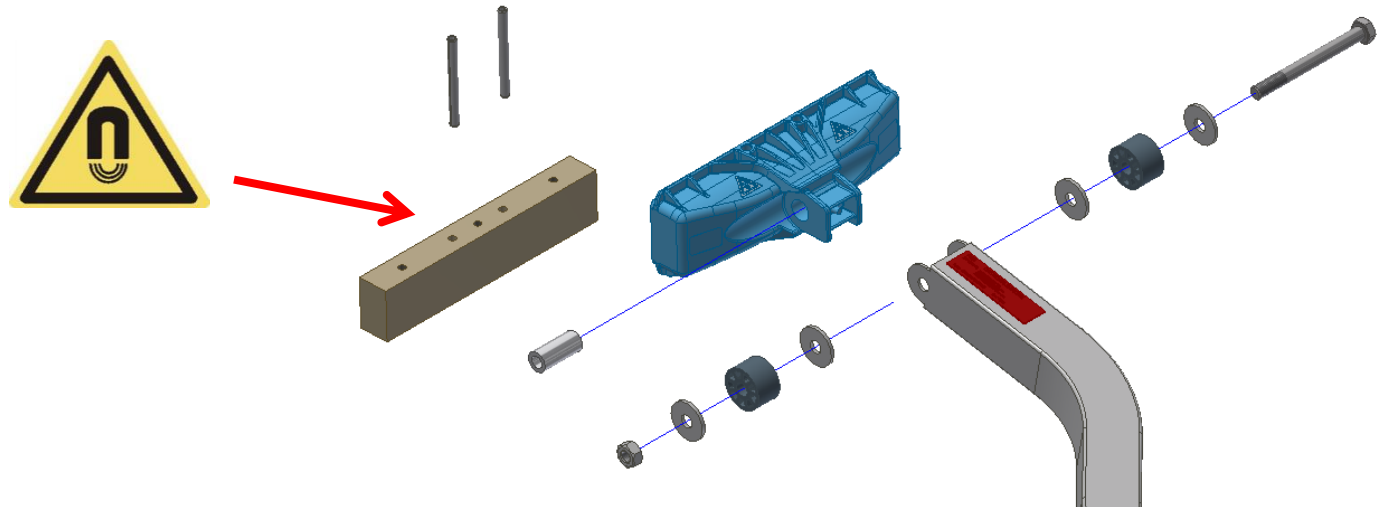
Conversion Magnet Housing



Current Configuration



New Configuration





Conversion Magnet Housing



A



B



B



A: Clamp the stanchion
B: Remove Nut and Washer



Conversion Magnet Housing

C



D



C: Mount new bolt M10x100 with washer-plastic bushing-washer

D: Mount bolt until it is just through the stanchion

E: Place the washer-plastic bushing against the stanchion

E





Conversion Magnet Housing

F



G



G



F: Mount the washer and new lock nut
Turn the nut with 22 Nm

G: Finally, check if the magnet housing
can be moved up and down manually.
This movement must have resistance and not
done with ease.

--#--